



THANK YOU,

WE COULDN'T HAVE DONE IT WITHOUT YOU!

We are delighted to say we have reached our financial goals for our Totolima bridge to be built this August. We are now fundraising for our next project!

STAY UPDATED!

<http://b2p.uwaterloo.ca/>

@UWB2P

<http://uwb2p.wordpress.com/>

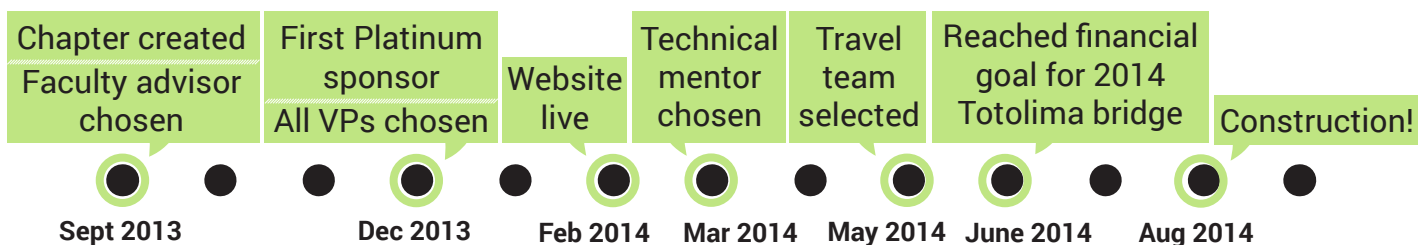
UPDATE: travel team

In preparation for our construction trip to Totolima, Bolivia, in a couple months (August to be exact!), UW B2P has chosen its travel team. As this project will be very involved, we chose our team carefully. The travel team members are: Dilan Badshah, Relja Lukić, Arthur Li, Marianne Baucas, Gabriel Caballero and Sion Chung. For a bit of Q&A and more details, please see page 3!

WHAT'S INSIDE . . .

New Community	2
UW B2P's Next Steps	2
Travel Team	3
Financial Goals	3
Special Thank You	4
Final Note	4

TIMELINE OF EVENTS FOR THE UW B2P CHAPTER SINCE FOUNDED DATE



UPDATE: new community

It's been a long journey, but we finally got a community that will benefit fully from our footbridge: Totolima, Cochabamba, Bolivia! This bridge will serve around 600 people, providing access to the city, markets, the school and roads. For more details, see page 2, or visit <http://b2p.uwaterloo.ca/project.html>.

THANK YOU TO OUR PLATINUM SPONSORS: PERI Formwork | Waterloo Engineering

TOTOLIMA: new footbridge in August!

The people of Totolima need to cross the river in order to reach the road, city, markets, and school. However, during rainy seasons, the river floods and they have absolutely no access to these essential institutions and resources. The members of this community mainly travel by foot and donkey/horse, meaning the footbridge will serve them well! For 4-5 months of the year, this river floods and cannot be crossed safely, and there are no reasonable alternatives to crossing the river. Totolima's main agricultural product is corn, and providing this footbridge will help them reach the main roads in order to move their goods. For more details, please visit <http://b2p.uwaterloo.ca/project.html>.



This is how the Totolima community currently crosses the river. We are working hard to change this for good! On top of this, during the rainy season – about four to five months a year – this river floods, making it even more dangerous to cross.

NEXT STEPS: Totolima footbridge

Now that we have our community, the finalized design, and our travel team selected, we are well on our way to building the footbridge with our community. Now, what lies ahead for our team includes finalizing vaccinations, logistics for materials, and actually constructing the bridge alongside the community! We are pumped to go and meet the wonderful people that the team is going to spend three weeks working and living with.

TOTOLIMA QUICK SPECS

Population:	600 people
Expected traffic:	60 people/day
Footbridge type:	Suspended
Bridge span:	25 m

FUNDRAISING

Our team is now raising money for our next bridge! We always love hearing new and fun ideas that we can incorporate into our fundraising events. If you have any, our VP of Fundraising, Chrisite Jeong, would love to hear them! You can reach her via email at jjeong@uwaterloo.ca.

PAST FUNDRAISING EVENTS

- Civil Engineering (class of 2017) crewneck sales
- Civil Engineering t-shirt sales



- Bottle drives

THANK YOU TO OUR PLATINUM SPONSORS: PERI Formwork | Waterloo Engineering

OUR TRAVEL TEAM: What are you looking forward to most come August?



"I am most excited to see our team work together with the community on a project that will bring prosperity to the community and humbleness and gratitude to our team. Oh, and llamas, llamas, llamas!"

RELJA LUKIĆ: project manager



"I'm most excited about visiting Bolivia for the first time and building a strong relationship with the community. I can't wait to bring back great stories about our first bridge!"

ARTHUR LI: technical manager



"I'm eager to see the fruits of all our hard work come to reality as we build a bridge that will have a tremendous impact on the community's way of life."

DILAN BADSHAH: construction manager



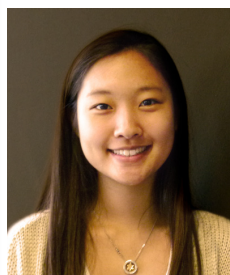
"I'm looking forward to meeting and bonding with the community as we build a bridge with them, so we end up not only constructing a physical structure, but making long-lasting connections."

MARIANNE BAUCAS: safety manager



"I'm excited to see all of our time and effort become a solid piece of engineering that will benefit the community! It was my pleasure being part of this amazing team since the beginning and learning alongside the others."

GABRIEL CABALLERO: relations manager



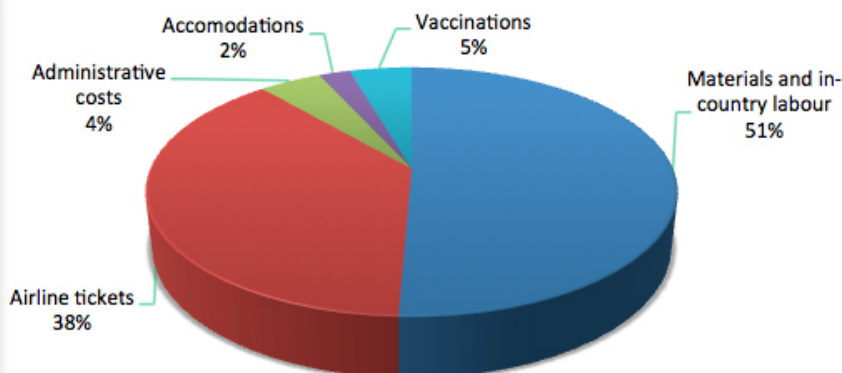
"I cannot wait to build a bridge with the community. Helping others through volunteering has been my greatest passion and working in the field that interests me makes me more excited than ever!"

SION CHUNG: quality control manager

FINANCIAL GOALS

It seemed like an improbable feat to raise nearly \$30 000, but with your incredible generosity and the work of our fundraising team, we did it! Now that we are ahead of the game, we are now raising money for our next bridge. The financial breakdown for our current bridge are detailed in the pie chart, as well as on our website: <http://b2p.uwaterloo.ca/donate.html>

TOTOLIMA BRIDGE EXPENSES



PLATINUM SPONSOR: Waterloo Engineering

Our chapter is so fortunate to be founded within a university that is supportive of their students. The Dean of Engineering has shown an immense amount of support for us, financially and publicity-wise.

**WATERLOO
ENGINEERING**

Waterloo is Canada's largest engineering university, and is famous for its great co-op program, giving students real-life experience backed by technical and analytical skills gained on campus. On the frontier of discovery, Waterloo Engineering prides itself on its culture of innovation, reputation for excellence, and talent fostering.

We are proud to be Waterloo Engineering students! <https://uwaterloo.ca/engineering/>

PLATINUM SPONSOR: PERI Formwork Systems

PERI is a global leader in formwork, scaffolding and related engineering.

With 6,700 employees, over 50 subsidiaries, and 110 supply centers, PERI serves its customers worldwide with innovative system equipment and a broad range of services related to formwork and scaffolding technology. PERI's comprehensive product range is the basis for the most cost-effective solutions in concrete construction for some of the world's most breathtaking building projects.



Established in 1995, PERI Formwork Systems Inc. provides engineered solutions and prompt service to its customers across Canada from 6 locations (Vancouver, Calgary, Winnipeg, Toronto, Montreal, and Halifax) to ensure optimum results for construction projects of all sizes.

PERI's innovative Self Climbing Technology provides just one example of why PERI is a leader in providing new technology to the formwork industry. Visit PERI at www.peri.ca for more details!

GOLD SPONSORS



**WATERLOO
ENGINEERING SOCIETY**

BRONZE SPONSORS



CIVILIAN
SCREEN PRINTING

SILVER SPONSORS



**CONESTOGA-ROVERS
& ASSOCIATES**



**PRICA
GROUP INC**



FINAL NOTE

It's been great working with you! We really can't thank you enough, and we and the community are extremely grateful for your contribution. However, there are many other communities in need, and we aim to help them as well! If your generosity can extend beyond this project, we would be ecstatic to have you on board.

If you have any comments on how we're doing or suggestions on how UW B2P can work to make our relationship stronger, please contact Grace, our VP of Media & Marketing Relations by email at gsjlee@uwaterloo.ca.